

**FOR SALE**

# **Yerington, Nevada**

**36 prime acres on Highway 95-A**

- +/-110 feet highway frontage
- Electricity on site
- City water across the highway
- Level and ready for Commercial, Light Industrial or Residential development
- Light soil with medium permeability
- Perfect location of all uses

**Asking \$395,000**

For further information please contact:

**Tom Gunn, Broker**

Lic. B.0014531

**775-343-0200**

**GUNN & ASSOCIATES REAL ESTATE, INC.**

PO BOX 1449

FERNLEY, NV 89408

fax: 775-343-0202

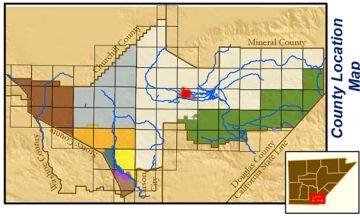
Email [NevadaFarmland@aol.com](mailto:NevadaFarmland@aol.com)

[www.NevadaFarmland.com](http://www.NevadaFarmland.com)

We encourage all prospective purchasers to submit terms other than those mentioned above for the owner's consideration. The information above is based upon data obtained from sources deemed reliable and is believed to be correct. However, Gunn & Associates Real Estate, Inc. and the owner assume no liability for accuracy, omissions, changes, prior sale or lease or withdrawal from the market without notice.

NW1/4 NW1/4 Section 13 & Portion E1/2 Section 14, T13N - R25E MD&M

14-48



**Location Map**

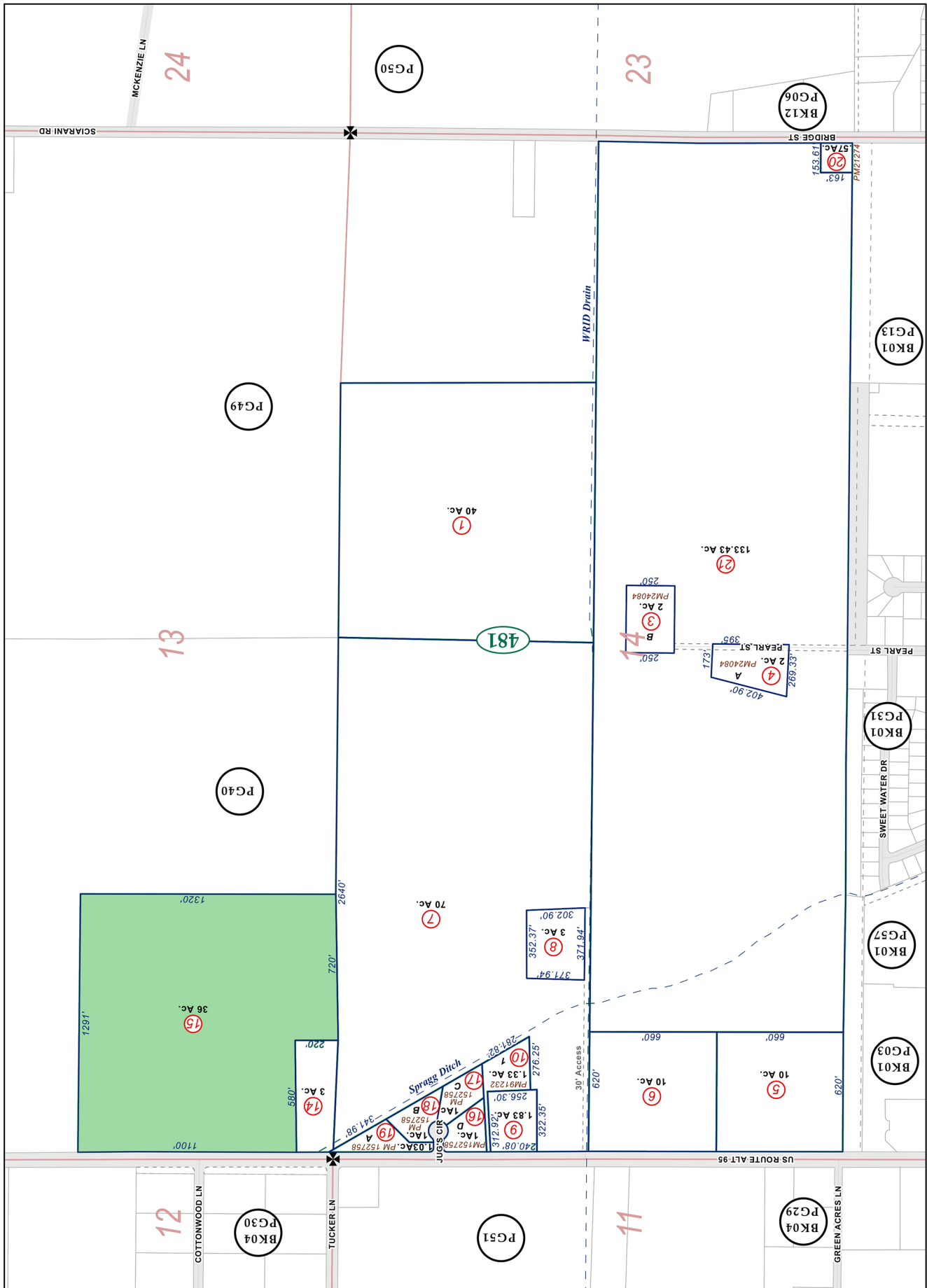
**Map Elements**

- 1/4 Corner Section
- Section Ties
- Dimensions
- Parcel Lot
- Parcel Number
- 0.13 Ac. Acreage of Parcel
- PM 1/36/69 Recorded Map Image
- Parcel Boundaries
- Block Number
- Parcel Book & Page Number
- Page Number

**Cities & Townships**

- Dayton
- Dayton Valley
- Fernley
- Mark Twain
- Mason Valley
- Mound House
- Silver City
- Silver Springs
- Smith Valley
- Stagecoach
- Yerington

Scale: 1" = 500'  
 Revised: April 5, 2012



NOTE: This is for assessment use only and does not represent a survey. No liability is assumed as to the accuracy of the data delineated hereon. Use of this plat for other than assessment purposes is forbidden unless approved by the Lyon County Assessor's Office.

